

# Enzymax, LLC

870 Corporate Drive, suite 201  
Lexington, KY 40503

# Product Information

**Product Name:** Cobra Venom Factor (CVF)  
**Catalog #:** SP1006  
**Size:**

**Order:** info@enzymax.net  
**Tel:** 859-219-8482  
**Fax:** 859-219-0653  
**Web:** www.enzymax.net

\*\*\*\*\*

## Product: Cobra Venom Factor (CVF)

**Product Description or background:** CVF is the complement-activating protein in cobra venom. Like C3b, CVF forms with factor B and factor D in human and mammalian serum the bimolecular C3/C5 convertase. This functional similarity of CVF and C3 correlates with many structural similarities, which led to the suggestion that CVF is evolutionally related to C3. CVF has the ability to activate the complement pathway, and to cause the depletion of complement in blood as is seen by the initial disappearance of the C3 alpha chain in the blood and the subsequent reappearance of newly synthesized C3 alpha chain.

### Unit Definition:

A: For semi-quantitative purposes 1 hemolytic unit of CVF is defined as that amount of CVF that results in 50% hemolysis.

B: 1 unit of anticomplement activity is designated as that amount in 0.1 ml of anticomplement factor required to cause 50% inhibition of hemolysis.

### Bioactivity:

A:  $\geq 2690$ U/mg B:  $\geq 83$ U/mg

**Storage:** Stable for 12 months at -20°C.

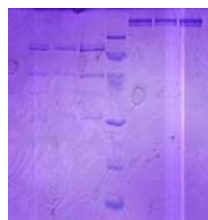
**Presentation:** Lyophilized POWDER

**Source:** purified from snake venom of *Naja naja atra*

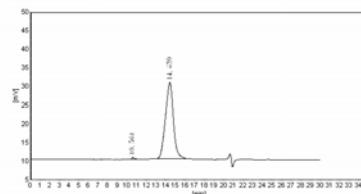
**Molecular Weight:** 180~220kDa

**Purity:**  $\geq 95\%$  by FPLC

## Analysis by SDS PAGE Gel



## Analysis by HPLC



### Snake Type: *Naja naja atra*

Chinese Cobra, widely distribute in provinces south of Yangzi River, including Taiwan.

Protein content (Folin's method):  $>90\%$

Humidity:  $<5\%$  Insolubility:  $<0.5$

Biotoxicity: LD50: 0.03-0.05mg/kg

