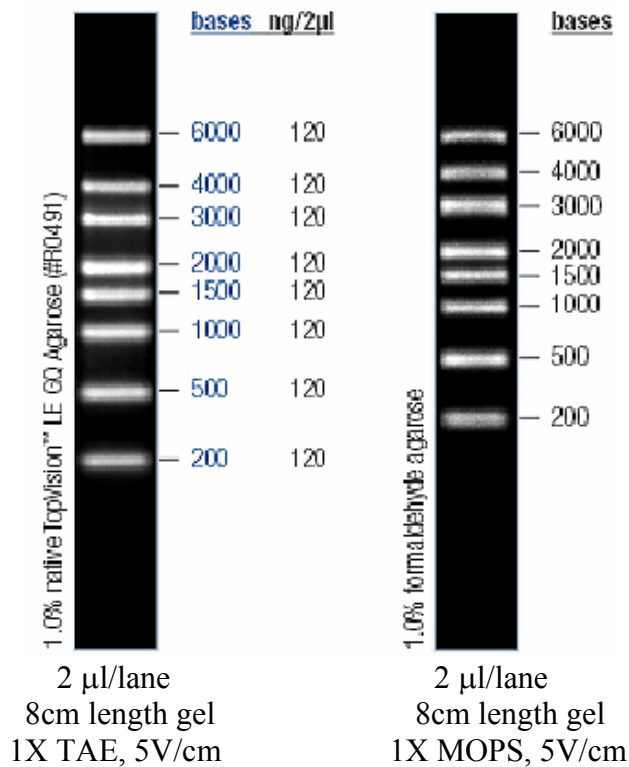


# Enzymax, LLC

A345 ASTeCC Building, University of Kentucky, Lexington, KY 40506  
Tel. 859-257-2300 ext. 280; Fax: 859-257-2489; [www.enzymax.net](http://www.enzymax.net)

**High range RNA Marker (200bp-6000bp): 5x20ul for 50 applications, quantitative and ready to use.**



## Range

8 fragments (in bases): 6000, 4000, 3000, 2000, 1500, 1000, 500, 200.