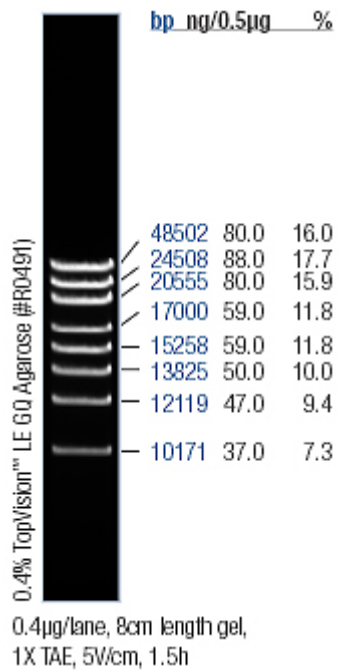


Enzymax, LLC

A345 AStECC Building, University of Kentucky, Lexington, KY 40506
Tel. 859-257-2300 ext. 280; Fax: 859-257-2489; www.enzymax.net

High Range DNA Marker (10kb-48.5kb), quantitative and ready to use.



Range

8 fragments (in bp): 48502, 24508, 20555, 17000, 15258, 13825, 12119, 10171.